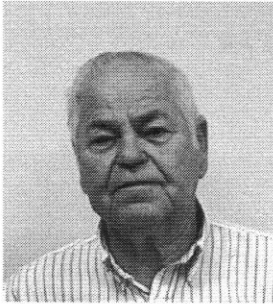
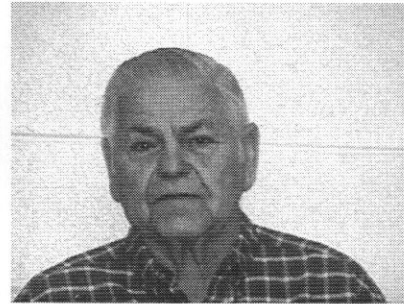


SEX OFFENDER COMMUNITY NOTIFICATION

Yell County Sheriff's Office
 P.O. Box 99 Danville, Arkansas 72833
 (479) 495-4881



Date Taken: 11/01/2007



Date Taken: 03/14/2007

Community Notification Level: 4 (Sexually Violent Predator)		DOB/Age: 06/17/1930 (81)	Last VOR:
Offender Name: Gideon, Delbert		Sex: Male	Race: Caucasian
Address: 10060 Outback Loop Dardanelle, Arkansas 72834		Height: 5' 07"	Weight: 185 lbs
Aliases: Not Available		Hair: Gray	Eye Color: Brown
Scars, Marks, or Tattoos: Back - lower - Scar - 4" Surgucal Scar			
Employer: Not Available		Probation Parole Office: Not Available	
School/College: Not Available			
Description of Crime: Sexual contact with 11-12 yr old female in 2003			

The Yell County Sheriff's Office is releasing information pursuant to section 13 of Act 989 of 1997, known as the *Sex and Child Offender Registration and Community Notification Guidelines*. This act authorizes law enforcement agencies to inform the public of a sex offender's presence when the release of such information will enhance public safety and protection. Individuals appearing on these notifications have been convicted of an offense requiring registration with the Arkansas Crime Information Center. **THIS OFFENDER IS NOT WANTED BY LAW ENFORCEMENT AT THIS TIME.**

Four community notification levels apply. The higher the level assigned, the broader the notification to the community. Level 1 (Low) warrants minimal notice to the community (usually other law enforcement and/or members of the offender's household only). Level 2 (Moderate) warrants limited notice to specific groups. Level 3 (High) warrants notification of all community members likely to encounter the offender. Level 4 is reserved for offenders who have a habitual or serious pattern of offending and are deemed sexually violent predators.

This notification is not intended to increase fear. It is our belief that an informed public will be safer. Information is available through many resources, including the state website maintained by the Arkansas Crime Information Center. More information is available from the resources listed on the back of this flyer. **Citizen abuse of this information to threaten, intimidate, or harass offenders will not be tolerated.** Such abuse could potentially end law enforcement's ability to share this information with the public. If notification ends, the offender will win since they derive power through secrecy.